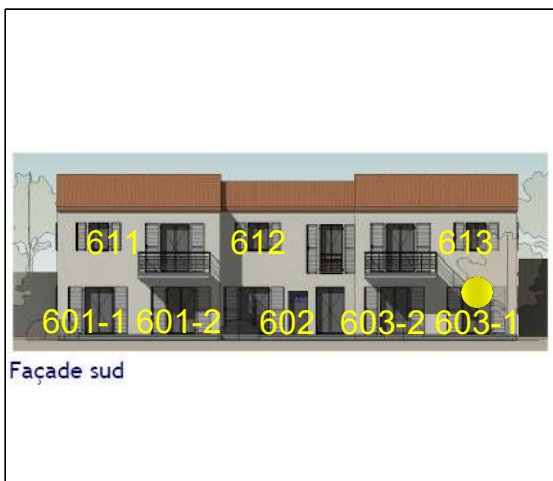
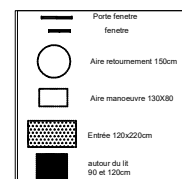
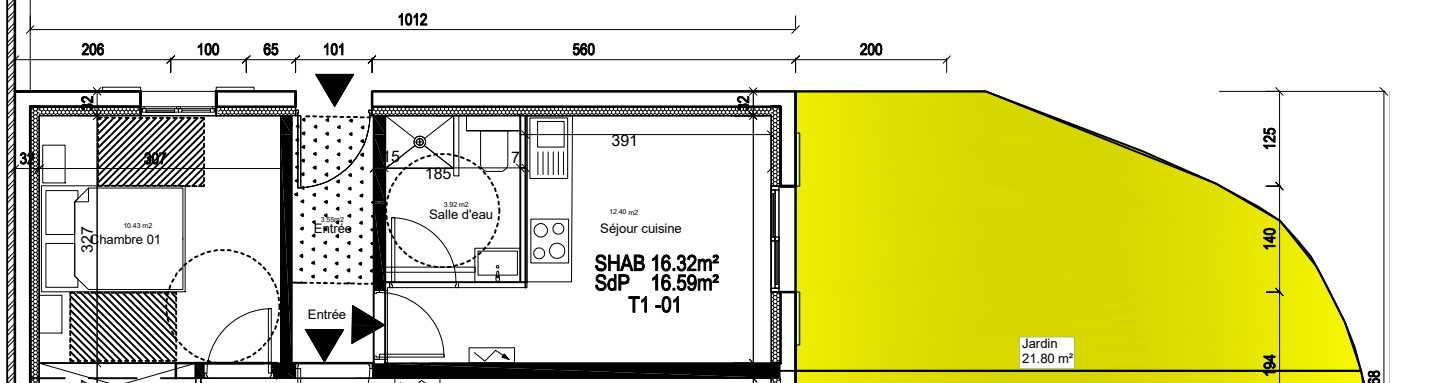


RESIDENCE SANTA REGINA



PLAN DE REZ DE JARDIN BAT N° 06 APPART N°603-1 T1



APPT N°603-1 T1 RDJ	
BATIMENT N° 06	
Séjour / Cuisine :	12,40 m ²
Chambre 01 / Placard	0 m ²
Cellier	0 m ²
Salle d'Eau	3,92 m ²
TOTAL HABITABLE	16,32 m²
Jardin	21,80 m²

T 1 PRIX : 79 000 €