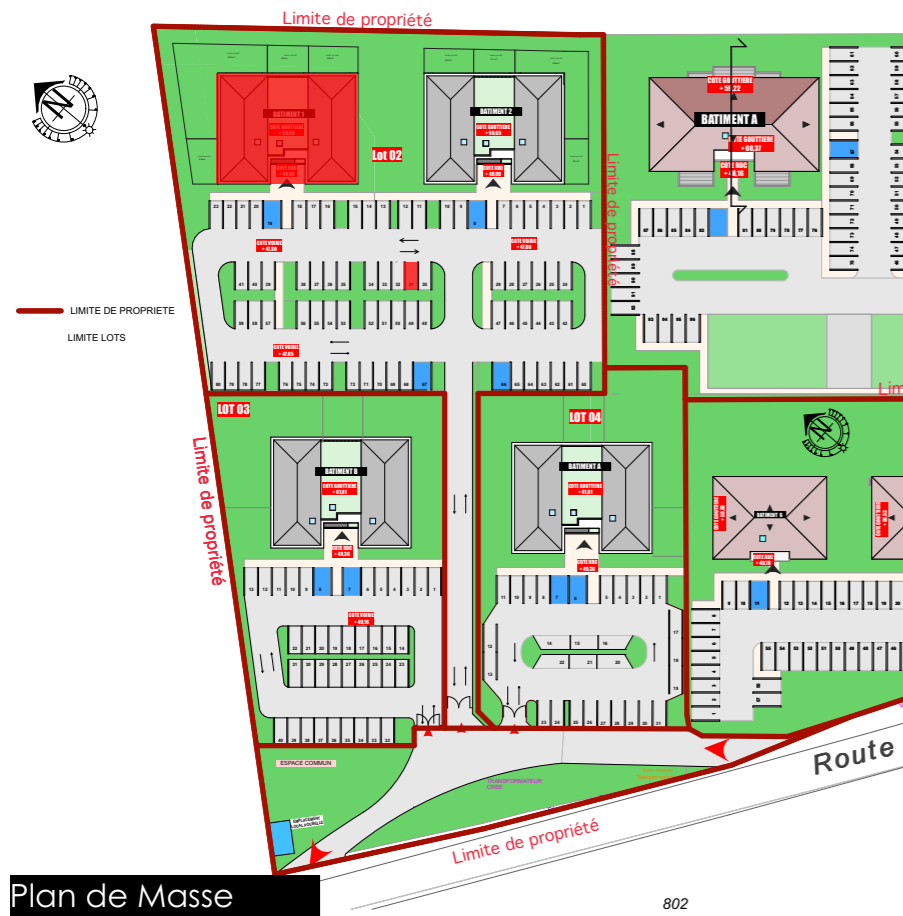


BAT 1 - Appart 104 - Parking 31



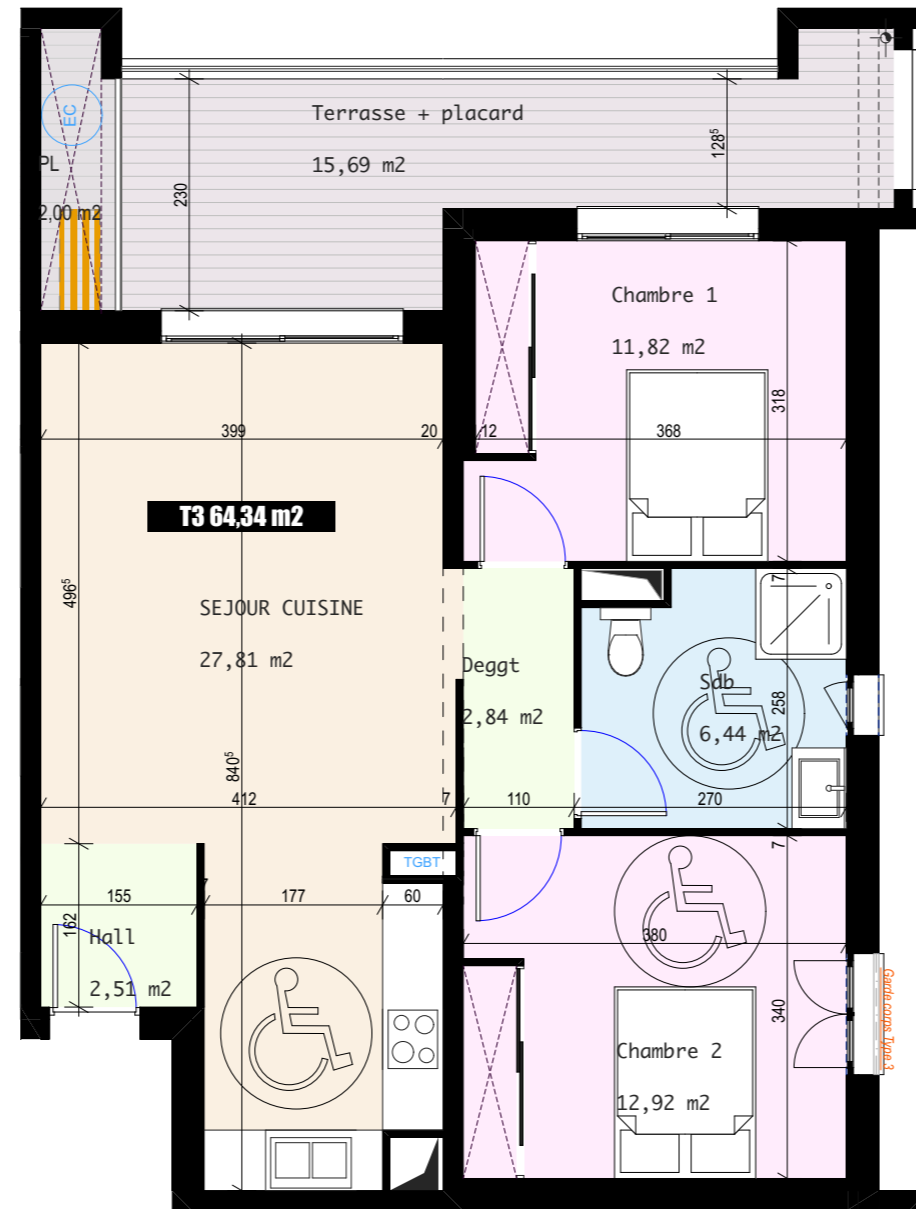
Vue Aérienne



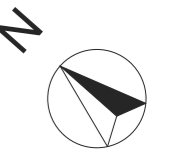
Plan de Masse



Perspective



Plan d'étage courant R+1



T3	104
Séjour Cuisine	27,81 m ²
Hall	2,51 m ²
Dgt	2,84 m ²
Chambre 1	11,82 m ²
Chambre 2	12,92 m ²
SdB+W.C.	6,44 m ²
TOTAL surface habitable	64,34 m²
Terrasse + placard technique	15,69 m ²

Résidence
U Sant' Anghjulu
 Bâtiment 1
 commune de VESCOVATO